

St. Benedict's Monastery

Snowmass, Colorado

Pitkin County)

\$150,000,000

3,720 +/- Total Acres



WELCOME TO ST BENEDICT'S MONASTERY



MirrRanchGroup.com
877.623.4545

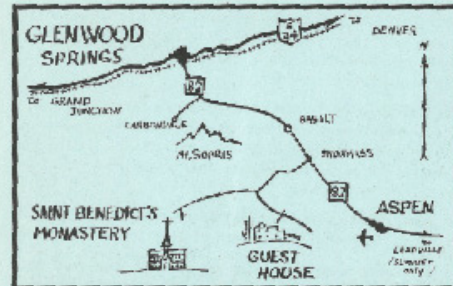
INTRODUCTION

Located just outside Aspen, Colorado, the approximately 3,720-acre St. Benedict's Monastery represents the largest holding in the immediate Snowmass/Aspen area. The property sits in a picturesque ranching valley surrounded by the lofty peaks of the Elk Mountain Range.

THE LARGEST REMAINING INTACT HOLDING IN THE ASPEN AREA.



MirrRanchGroup.com
877.623.4545



Public transportation is available into Glenwood Springs by train or bus. Airline service is available into Glenwood Springs, Grand Junction and Aspen. A local bus line will take you to Snowmass. Telephone the Guest House (800 4128) from Snowmass for further transportation.

LOCALE

St. Benedict's Monastery is located near the end of Capitol Creek Road in Snowmass, Colorado, along East Sopris Creek in the Capitol Creek area of Old Snowmass. The headquarters of the property sits at about 7,700 ft. just below Haystack Mountain, where hikers and horseback riders embark on trips into the upper Capitol Creek watershed in the Maroon Bells-Snowmass Wilderness Area and White River National Forest. The ranch is 30 minutes from Aspen and offers extraordinary, unencumbered views of the snow-capped Elk Range from Haystack Mountain to Mt. Sopris. Accessed by a County Road that dead ends at the National Forest boundary just past the property, the ranch features elevations ranging from 7,400 to 9,300 feet.

The property encompasses three main areas: the 2,780-acre Headquarters, including the monastery and retreat center; the 437-acre Spaulding Mesa, an irrigated mesa adjoining the Headquarters to the west; and the 567-acre McCartney Mesa to the south, which towers over the entire property. Three main creeks, Capitol Creek, Lime Creek, and Little Elk Creek, meander through the ranch for over five miles.



MirrRanchGroup.com
877.623.4545

THREE MAIN CHARACTERISTICS

THE MONASTERY

The headquarters sits in its pristine private valley, which is formed by Lime Creek, Little Elk Creek, and Capitol Creek. Small peaks and mesa tops surround it on three sides that rise from the valley floor. It includes hundreds of acres of meadows, pastures, and miles of cottonwood-lined riparian corridors. The monastery and retreat center is situated on the far eastern side of the valley, with views across the meadows, grazed by cattle and wildlife, to the surrounding mountains and mesas. Brushy slopes ascend from the meadows to mesas and steep forested hillsides.



SPAULDING MESA

Spaulding Mesa rises slightly from the Capitol Creek Valley to a lush irrigated mesa. With its elevated nature, the property has unending panoramic views and is part of a mosaic of other irrigated farms that dominate this pastoral valley. Mt. Sopris and the Elk Range dominate the viewshed. Almost the entire mesa is irrigated with some of the best meadows and water rights on the entire ranch.



MCCARTNEY MESA

McCartney Mesa overlooks the entire valley. Its lofty height provides unobstructed views of the Elk Range, including Haystack, Daly, and Capitol Peak, the largest peak in the Elks. The Gore Rangel and the Sawatch Range are also visible. The lower reaches of McCartney Mesa, from Little Elk Creek to the mesa, are tree-covered with scenic small glades and irrigated meadows enveloped by aspens.



CONSERVATION VALUES

The Maroon Bells-Snowmass Wilderness is only a few miles off the property boundary, and the property adjoins protected lands with conservation easements held by the Aspen Valley Land Trust and Pitkin County Open Space. The property is unencumbered by any conservation easements and is located in a high-value area for low-density and exclusive rural development. It is highly valued for its conservation values, scenic vistas, abundant wildlife, important habitat, and rural and agricultural character.

The Monastery is an excellent candidate for conservation given its inherent conservation values, and other than the spiritual buildings, it has not been developed. The ranch is in a high mountain, rural, and agricultural valley with abundant wildlife, scenic mountains, valley views, endless recreational options, and unrivaled privacy.



MirrRanchGroup.com
877.623.4545

SPACIOUS DESIGN AND INNER SENSE OF QUIET



The monks built and designed the main monastery following the design plan of a 12th-century Cistercian Abbey. Cistercian architecture is beautiful because of its unadorned simplicity, spacious design, and inner sense of quiet. The thick walls, arched windows, and peaked cupolas are reminiscent of the ancient religious retreats in France and Italy. The Monastery was expanded in the mid-80s as its ranks increased. The entire wood shake roof (32,000 sq. ft.) was replaced in 2019 with fire-resistant CeDUR shakes.



MirrRanchGroup.com
877.623.4545

TRANQUIL SETTING AND UNIQUE ARCHITECTURE

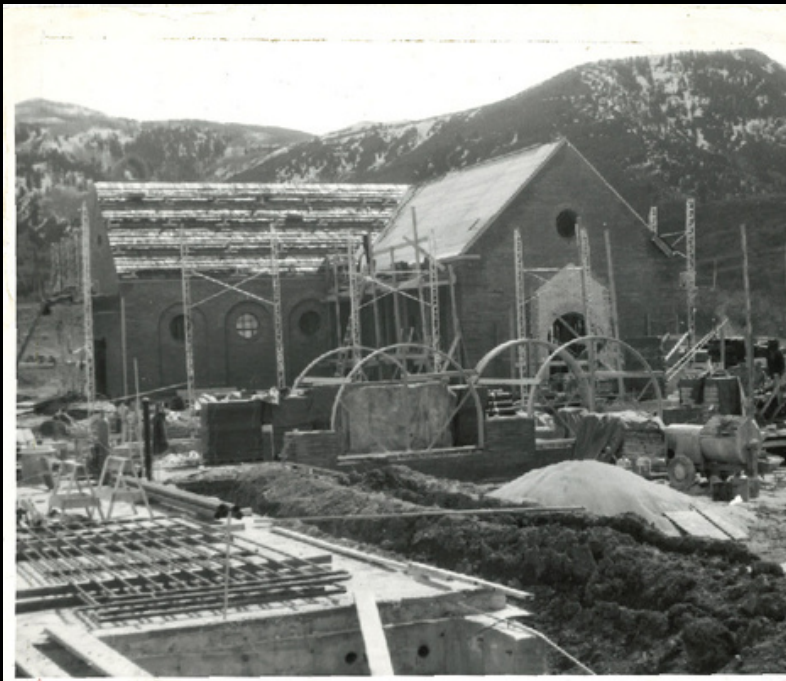
Groundbreaking for the retreat center began in 1992 and was consecrated in 1995. The renowned Aspen firm of Conger Fuller designed the center and received an excellence award for religious architecture from the American Institute of Architecture. The center uses passive solar design principles, incorporating daylighting throughout, and is constructed primarily of reclaimed timber and local stone. The building's form draws inspiration from vernacular ranch structures, and the meditation hall provides a tranquil setting for spiritual practitioners to experience the Monastery's pristine setting. They also designed and built several hermitage cabins around the center and on top of McCartney Mesa.



MirrRanchGroup.com
877.623.4545

HISTORY

Trappist monks came to the Roaring Fork Valley in 1956 and established St. Benedict's Monastery. Construction of the green brick monastery did not begin until 1958 under the supervision of a pioneer in contemplative prayer and the heartbeat of St. Benedict's, Rev. Thomas Keating. Rev. Thomas Keating started the Snowmass Interreligious Conference in 1984, which brought leaders of different faiths worldwide to St. Benedict's Monastery, which lasted for over three decades.



Trappists Set Up West Slope Monastery

By JOY H. TRUITY
Times Post Special

SNOWMASS, Colo., July 16.—Construction of a monastery to accommodate 60 Trappist monks is being pushed here by 21 members of the Cistercian Order of the Strict Observance. It is the first establishment of Trappists in Colorado.

When finished, the monastery will be complete with church, chapel, quarters for visiting priests and daily seeking retreat, bakery and dairy facilities.

In Pitkin county, the monastery is being built on a 2,000-acre ranch

formerly owned by Govlon LaKey. The site was donated by two benefactors.

Under the direction of the Rt. Rev. M. Edmund Furrer, OCSO, abbot of St. Joseph's Abbey, Spencer, Mass., the 21 brothers currently at work arrived here last February.

Each of the brothers was selected because of special skill in construction work. Manual labor is part of the devotion of the order, which adheres to a life of prayer, penance and silence.

The Trappist order is strictly enclosed and separated from all

apostolic work such as teaching or preaching. The Cistercian life is one "hidden away with Christ in God," of prayer, repetition and thanksgiving. The chief duty is the singing of the Divine Office in choir at appointed hours. All monks arise at 2 a. m. daily for singing matins and lauds. Frequently during the day they repair to the church to sing other hours of the Divine Office.

Agriculture and cattle raising are traditional means of support in Cistercian houses. The Snowmass Brothers already have acquired a herd with cattle ob-

tained from the ranch. LaKey is assisting, temporarily.

Members of the order dress practically for their work, in overalls and slacks. Their youthful faces are beardless, hair is close-cropped and each monk wears a brown hood thrown back from his head. White cowls are worn outside working hours, reaching almost to the floor.

The Cistercian monastic order was founded in the year 1098 at Cîteaux, France, stemming from the ancient order of the Benedictines, and is today one of the

few contemplative orders of men of the church.

The Colorado group is an outgrowth of the Spencer House, in Massachusetts, where facilities no longer could accommodate the monks.

Some of the brothers presently working at Snowmass will remain only long enough to accomplish their particular speciality.

Accommodations for visitors will not be completed before late fall or early spring. The Rev. M. Leo Slatore, OCSO who is in charge of development, said,

This was also read over the Silverwood Radio! DENVER POST July 16/56 photo

ESTABLISHED IN 1956



JUST 30 MINUTES TO **WORLD-CLASS RESORTS**

LOCAL RECREATION

St. Benedict's Monastery offers a sizable private sanctuary for many activities, including fishing, hunting, horseback riding, hiking, snowshoeing, snowmobiling, and cross-country skiing. Coupled with the general area recreation opportunities, including alpine skiing 30 minutes away at Aspen (Ajax), Aspen Highlands, and Snowmass, the property offers an unparalleled home base for any high-mountain outdoor enthusiast.

World-class recreational amenities, the famous restaurants and shopping of Aspen are all conveniently located from the property and just 20 minutes from the Pitkin County Airport, where flights connect from many major U.S. cities. The quaint town of Basalt is also just 20 minutes away.



MirrRanchGroup.com
877.623.4545

EXCELLENT FOR ANY HUNTING ENTHUSIAST

HUNTING

The hunting at St. Benedict's Monastery is excellent for any hunting enthusiast. The Monastery is located in Colorado Game Management Unit 43, widely regarded as one of the finest trophy mule deer units in the western United States. Because of the size of the ranch (and associated priority), transferable landowner deer tags may be secured yearly. Deer hunting on the ranch itself is fabulous. Still, the tags also enable one to hunt thousands of acres of the neighboring Snowmass/Maroon Bells Wilderness, including three drainages renowned for producing world-class bucks.

The area is also known for producing some great bull elk as well. A 350" elk bull was harvested in the adjacent national forest. Black bears, wild turkeys, and mountain lions are also present. Both residents and non-residents may secure most bull elk tags over the counter. As with deer, tag-holders may hunt the ranch and adjacent public lands.



MirrRanchGroup.com
877.623.4545

FISHING

Capitol Creek meanders through the ranch for approximately 2.5 miles. It is a fabulous small-stream fishery with both cutthroat and brook trout. Above the ranch, the Capitol Creek Trail follows the creek for miles through the wilderness, providing limitless fishing opportunities. Trophy rainbows and browns can be pursued on the Gold Medal Roaring Fork and Frying Pan Rivers, both of which are minutes away from the ranch.



MirrRanchGroup.com
877.623.4545

AWE-INSPIRING COLORADO ROCKIES **IN YOUR OWN BACKYARD**

RECREATION

The awe-inspiring Colorado Rockies are your backyard here. The property provides your own personal trailhead, so recreational offerings include all that these mountains are famous for mountain climbing, hiking, high country lake fishing, horseback riding and packing, backcountry and cross-country skiing, fly-fishing, wildlife viewing, and hunting, as well as all that the nearby, famous resorts and towns offer, such as downhill and cross-country skiing, whitewater rafting, and mountain and road biking. Peak-bagging on Capitol Peak, Mt. Sopris, the Maroon Bells, and other high-profile mountains in this valley and adjacent drainages are popular activities for locals and visitors alike.



MirrRanchGroup.com
877.623.4545

WATER RIGHTS

Most of the water rights owned by St. Benedict's are used to irrigate the extensive Monastery grounds. The Monastery can irrigate up to 1,500 acres of hay fields, though, in a typical year, they irrigate closer to 1,200 acres. The St. Benedict water rights are typically reliable but depend on snowpack from the surrounding mountains.



MirrRanchGroup.com
877.623.4545



Most fields are irrigated by flood irrigation, but St. Benedict's owns six side-rolled sprinklers that are capable of irrigating about 40 acres each. St. Benedict's grows hay with this water, producing, on average, about 300 tons per year. For most of its history, the monks cut, baled, and sold the hay. In recent years, St. Benedict's sold most of its ranching equipment and began leasing its fields to a neighboring ranch, which has continued to irrigate and grow hay on this property.



MirrRanchGroup.com
877.623.4545

FEATURING

- 30 minutes from Aspen
- Situated in the pristine Capitol Creek valley
- The largest property of its kind near Aspen
- Three creeks meander through the ranch for over 5 miles
- Irrigated meadows with historic water rights irrigating 1,200 acres
- Features three main characteristics:
 - The 2,780 +/- acre main headquarters, including the monastery and retreat center
 - The 437 +/- acre West Meadow, an irrigated mesa that adjoins the Headquarters to the west
 - The 567 +/- acre McCartney Mesa to the south that towers over the entire property
- Excellent hunting opportunity as the property sits in Colorado Game Management Unit 43
- Small stream fishing on Capitol Creek
- Private and unspoiled with trails perfect for hiking, horseback riding, snowshoeing, snowmobiling, and more
- Excellent opportunity for conservation easement

TAXES

The property is owned by a religious non-profit organization and has tax-exempt status.

AESTHETIC VALUE

It is one of the most scenic valleys in Colorado, let alone Pitkin County.

INVESTMENT VALUE

Impossible to replicate and find such a property.

MINERAL RIGHTS

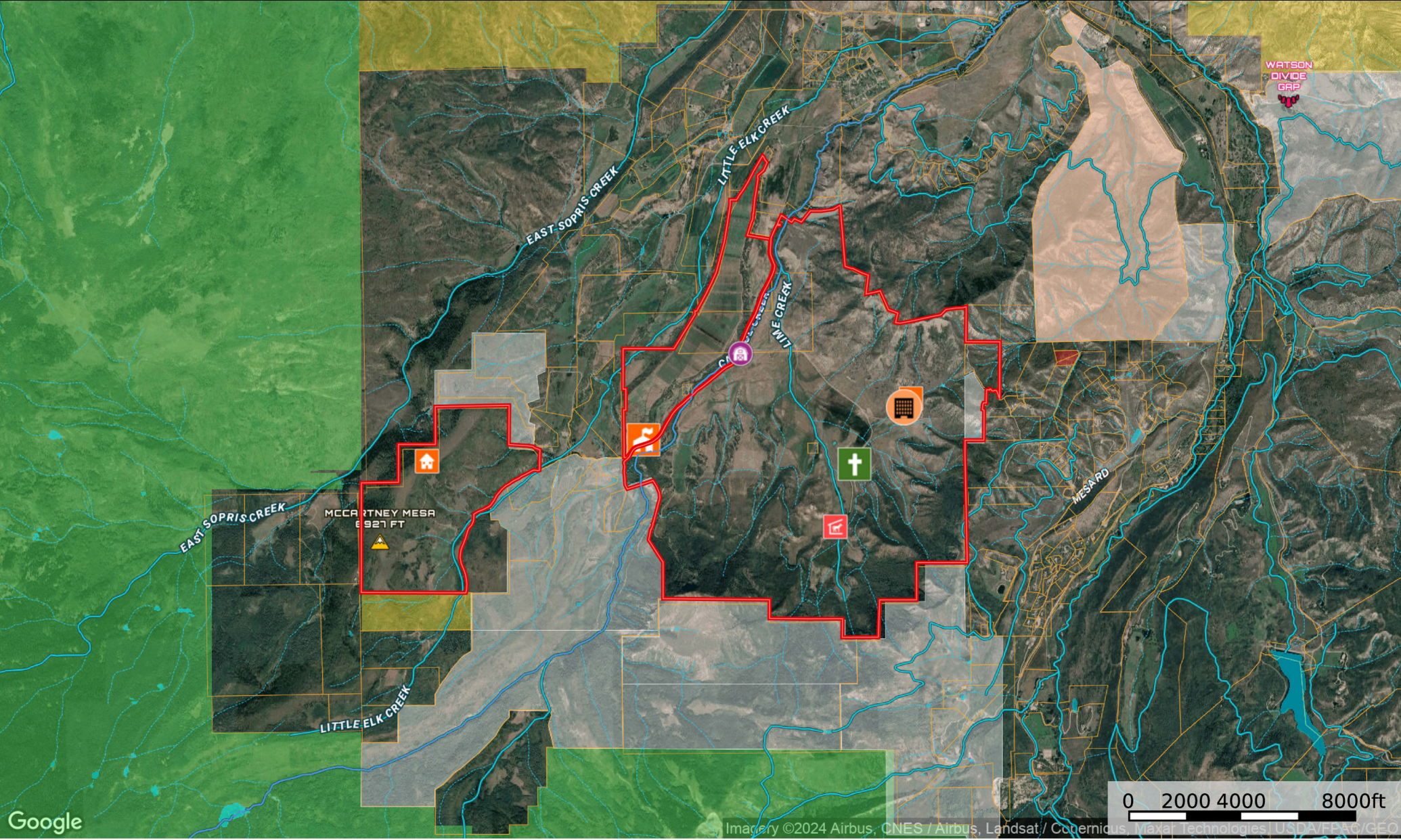
Seller will convey any and all mineral rights owned.

LEASES

The property is currently leased for hay production, cattle, horseback riding, and hunting.



AERIAL MAP



Google Imagery ©2024 Airbus, CNES / Airbus, Landsat / Copernicus, Maxar, Technologies | USDA/FPAC/GEO

School	Ski Area	Egery	Hermitage Cabins	Retreat Center	Monastery	Barn and Ranch	Stream	Boundary	Forest Service	State Land	Fish and Wildlife	National Park	Other
BLM	Local Government	Conservation Easements	Stream, Intermittent	River/Creek	Water Body								

LOCATION MAP



REACH OUT FOR MORE INFORMATION

St. Benedict's Monastery

Snowmass, Colorado

(Pitkin County)

\$150,000,000

3,720 +/- Total Acres



CONTACT

Ken Mirr

P: 855-928-1479

M: 303-888-0907

Ken@MirrRanchGroup.com

Haley Mirr

P: 855-928-1479

M: 303-895-7464

Haley@MirrRanchGroup.com

This property is offered by Mirr Ranch Group, LLC. All information provided by Mirr Ranch Group, LLC or their sales representatives in connection with this property was acquired from sources deemed reliable and is believed to be accurate and reliable, however, we do not warrant its accuracy or completeness. Mirr Ranch Group, LLC recommends that every item of interest to the purchaser (i.e. water laws, mineral laws, zoning, land use regulations, state, federal and private permits) be independently verified by the purchaser's attorney.



MirrRanchGroup.com

877.623.4545