



*Protecting Clients. Conserving the Land.*

## San Jacinto Ranch

49,723± Acres

Presidio County, Texas



**James King, Agent**

Office 432-426-2024

Cell 432-386-2821

[James@KingLandWater.com](mailto:James@KingLandWater.com)

**Harrison King, Agent**

Office 512-840-1175

Cell 432-386-7102

[Harrison@KingLandWater.com](mailto:Harrison@KingLandWater.com)





## Location

50 miles south of Marfa, the "Art Hub" of West Texas, and just north of Big Bend Ranch State Park where the east and west branch of Casa Piedra Road divide there is an iconic mountain towering over the Chihuahuan desert called San Jacinto. This volcanic geologic landform is the center piece of a 49,723±ac ranch that is “national park” quality with all its canyons, rock formations, rims, caves, grasslands, and desert plants.

## Acreage

49,723± acres



*Protecting Clients. Conserving the Land.*



---

## Description

The ranch is a combination of 100% ownership in a checkerboard and majority undivided interest in the remainder covering a total of 49,723± acres. San Jacinto Mountain is the centerpiece of this ranch which towers up to 5082 feet with Casa Piedra County Road crossing the southern end of the ranch. San Jacinto Creek and Little San Jacinto Creek create a maize of canyons and outcrops across the northern and southern part of the ranch. The Green Valley to the east is below an amazing rim found on the ranch where you can look into the Chisos Mountains to the south and the areas mountains below Alpine like Cathedral, Goat, Elephant and more. Big Bend Ranch State Park is just 30 minutes away to the south creating additional outdoor adventure. Other mountains located on the ranch are the Horseshoes, Cerro Boludo, and the south rim of Tascotal Mesa.

The ranch has a variety of roads that get you surprisingly around the rugged landscape. There is an historic Adobe Headquarters waiting to be restored and there are a number of water wells all with new Solar pumps and storage with a variety of water troughs.



*Protecting Clients. Conserving the Land.*

---





*Protecting Clients. Conserving the Land.*

---





## Habitat

The landscape is rolling hills, mesas, canyons, grasslands, and scrublands surrounded by rugged mountain ranges which can be seen from most places on the property. Classic “Cattle County” of the Old West, San Jacinto Ranch has maintained much of the environment and appearance of times past. This vast area lies in an elevation range between 3,500 feet to 5,082 feet up on San Jacinto, allowing for a mix of vegetation from the mid-to upper-Chihuahuan Desert such as Spanish dagger, yucca, mesquite, ocotillo, creosote, catclaw, four-wing saltbush, and cholla with a mix of blue grama, black grama, bear grass, plains bristlegrass, green sprangletop, bush muhly, numerous three awn grass, sideoats grama with scattered brush. Canyons and creeks have heavier brush like mesquite, desert willow, soap berry, buckeye, white brush, hackberry, juniper and oaks.



*Protecting Clients. Conserving the Land.*





*Protecting Clients. Conserving the Land.*



---

## Wildlife

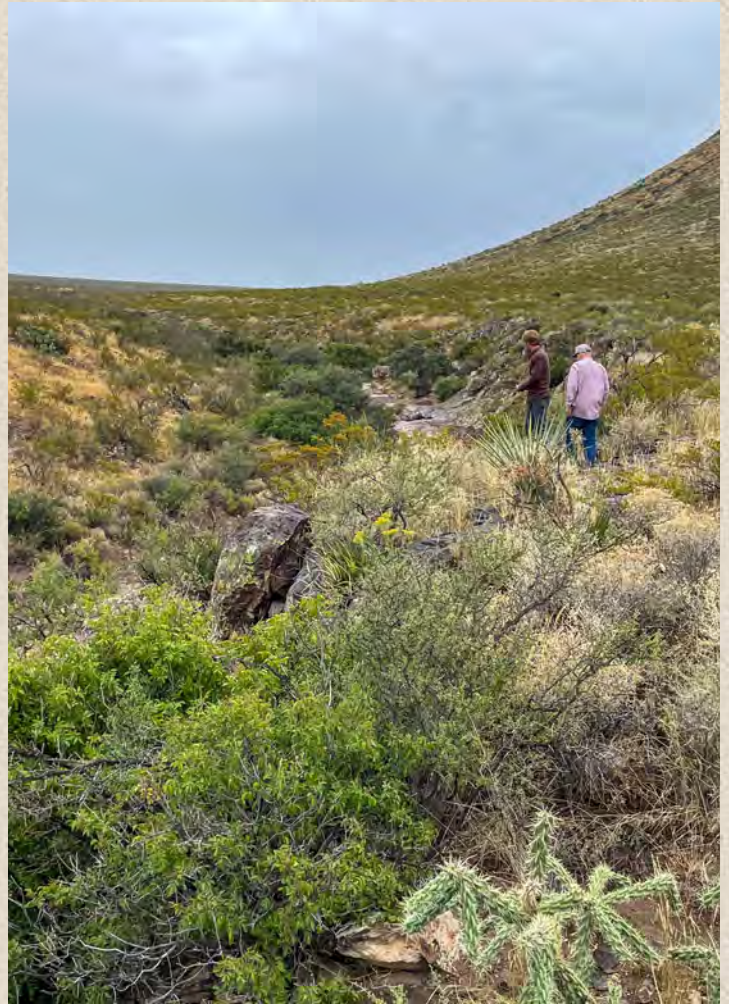
Although there is a wide variety of wildlife species on San Jacinto Ranch, the Desert Mule Deer size and populations are excellent. Additionally, this is Aoudad country with the variety of bluffs and cliffs providing essential escape habitat. Harvesting 33-36 inch Aoudad is common. Blue quail are dispersed throughout the ranch and there is also great dove hunting at the water tanks. The Ranch is also home to many species of birds, raptors, and songbirds. The brush, trees, grasses, and forbs provide excellent habitat for these game and non-game animals. This is Chihuahuan Desert hunting land at its best and a nature lover's dream.



*Protecting Clients. Conserving the Land.*

---

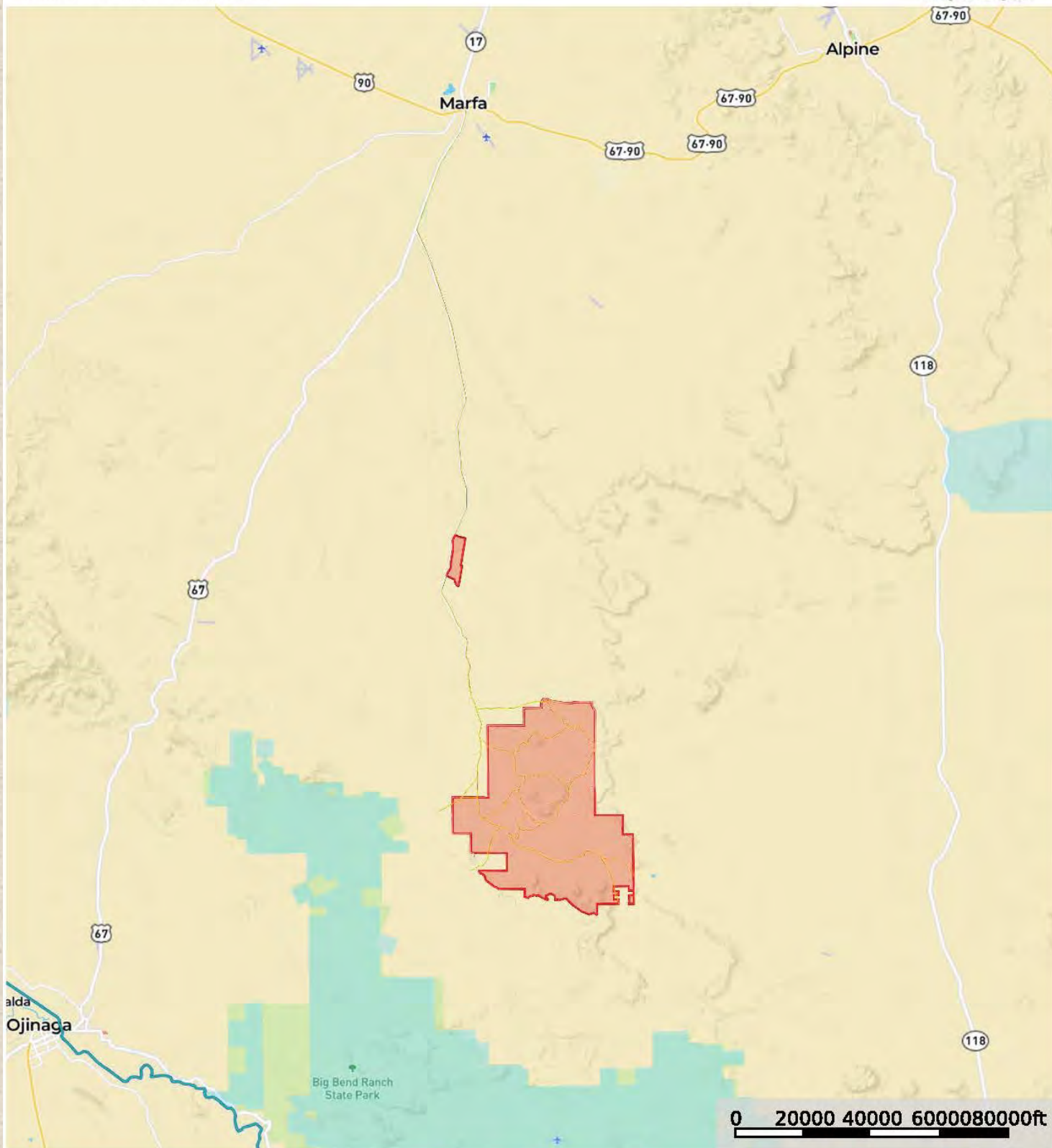






# San Jacinto Ranch

Presidio County, Texas, AC +/-



King Land & Water LLC

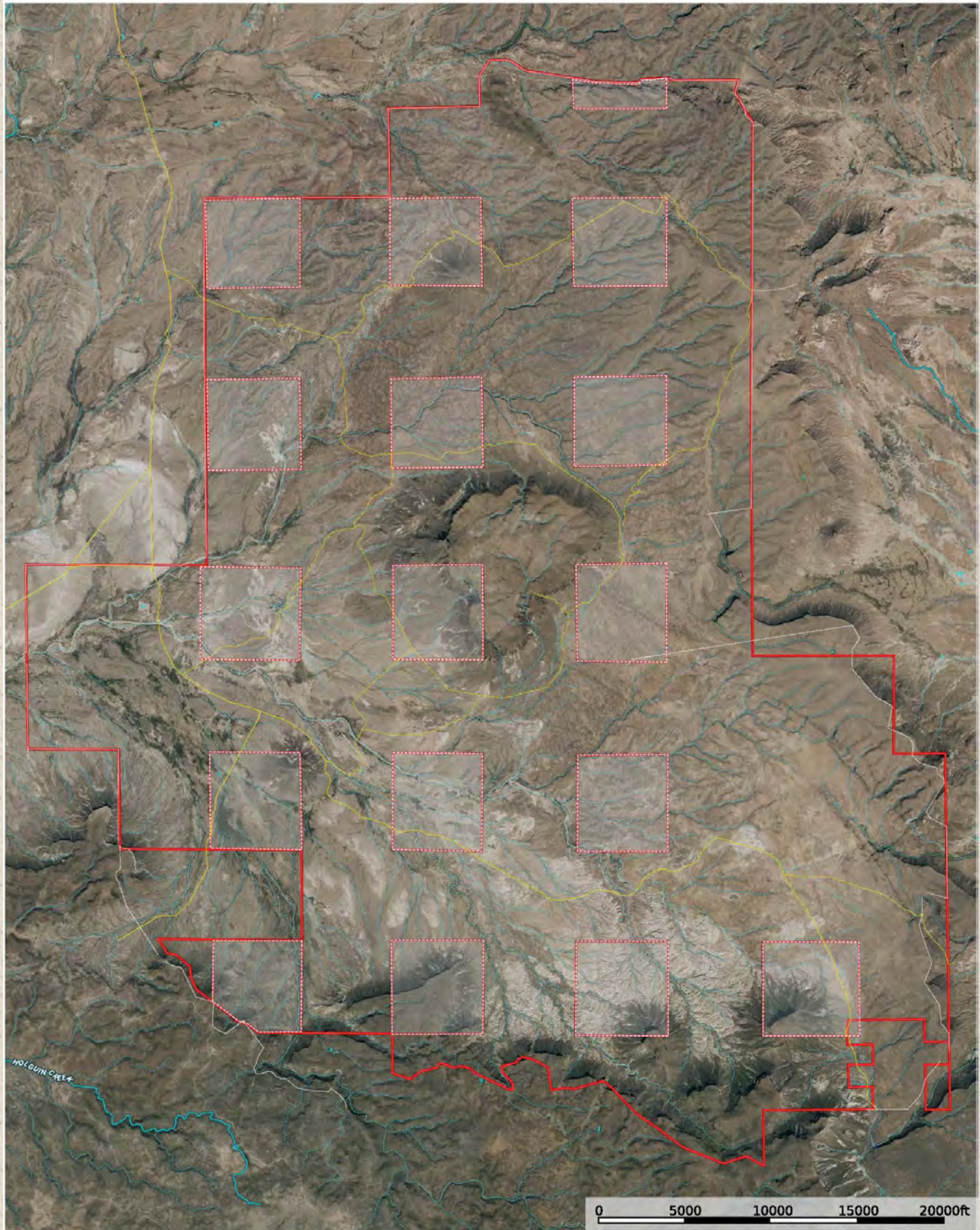
P: (432) 426-2024 / (512)-840-1175

[kinglandwater.com](http://kinglandwater.com)

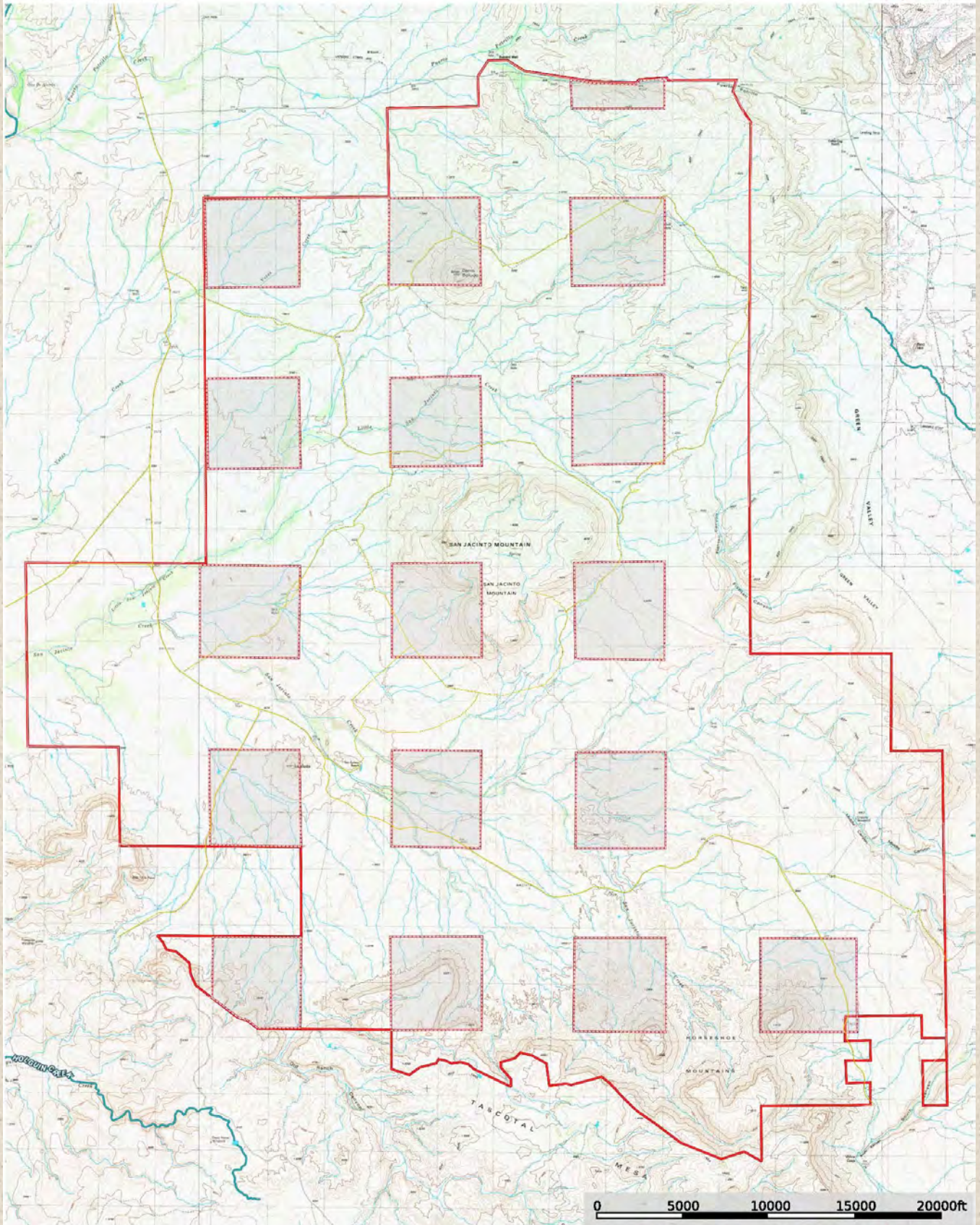


The information contained herein was obtained from sources deemed to be reliable. MapRight Services makes no warranties or guarantees as to the completeness or accuracy thereof.













## Contact

**James King, Agent**

432 426.2024 Office

432 386.2821 Cell

[James@KingLandWater.com](mailto:James@KingLandWater.com)

**Harrison King, Agent**

Office 512-840-1175

Cell 432-386-7102

[Harrison@KingLandWater.com](mailto:Harrison@KingLandWater.com)

### Disclaimer

This Ranch offering is subject to prior sale, change in price, or removal from the market without notice. While the information above was provided by sources deemed reliable, it is in no way guaranteed by the broker or agent.

[Information About Brokerage Services](#)



*Protecting Clients. Conserving the Land.*

---