



*Protecting Clients. Conserving the Land.*

# Desert Mountain Ranch

20,424± Acres  
Brewster County, Texas  
Close to Big Bend National Park



**James King, Agent**

Office 432-426-2024

Cell 432-386-2821

[James@KingLandWater.com](mailto:James@KingLandWater.com)

**Harrison King, Agent**

Office 512-840-1175

Cell 432-386-7102

[Harrison@KingLandWater.com](mailto:Harrison@KingLandWater.com)

Desert Mountain Ranch name says it all. Tucked away within the solitude of the Chihuahuan Desert of Brewster County just north of Big Bend National Park and Black Gap WMA the ranch is rich in history, habitat, geology, and modern conveniences.





## Location

Thirty miles south of Marathon on Highway 385 you turn east on gravel Dove Mountain Road, which was recently remodeled into a 30 mile an hour private road, then 28 miles to the front gate on deeded road through two ranches. The road south of Marathon into Big Bend is nothing like the development on the west side of the park as it is still large ranches with landscape views to the horizon. The perfect backdrop to the “way back in there” private Desert Mountain Ranch. The Ranch is located along the western end of the Bullis Gap Range with its variety of mountains, canyons, valleys, draws, and limestone bluffs.

This ranch is embedded in a landscape of public lands creating unlimited recreational opportunities just down the road. Big Bend National Park, Black Gap WMA and Big Bend State Park create the largest assemblage of public land in Texas.

## Acreage

20,424.25± Acres



*Protecting Clients. Conserving the Land.*

## Description and Improvements

The ranch has a centrally located Headquarters with above average improvements that makes getting here worth the stay. The deeded road into the ranch was recently improved so it is a straight shot and a hour drive from the highway all within the valley floor and easily traversed with trailers and equipment. The Headquarters itself is just south of the north Beef Canyon Draw in a private southern branch with a complex of buildings, barns, lodge, and a two rock camp houses. There is a maintained airstrip at the complex that is currently 4,400 ft with lots of room for expansion. The ranch can also be accessed on its southern boundary using Bullis Gap Road.

In recent times, the ranch has been a working cattle and hunting operation just waiting for the new owner. There are wells and water troughs scattered around the ranch, as well as several dirt tanks that catch water during the summer monsoon season. A private tributary of Beef Canyon is called Beef Gap which you can drive through this amazing steep canyon walls to a large dirt tank in a hidden valley. Lots of topography and mountains and canyons and even a significant Indian Cave. Excellent road system with just a little work at several crossings makes getting around this ranch a breeze including several landscaped rocked cattle guards with Desert Mountain Ranch over-head signs.

Improvements include the following:

- Two story Ranch House Lodge with great room/kitchen/2bedroom with bath downstairs and bunkroom with bath upstairs. Rock patios with large front covered porch.
- Rock home 1ba/kitchen used by past caretakers
- Second rock bunkhouse with fireplace, bath, and kitchen.
- Large natural rock barn with feed/tack room with several outbuildings
- Saloon with amazing bar, pool table, shuffleboard, jukebox, dart board, and many historic memorabilia including several deer mounts and historic pictures. Has back and front large porches. Upstairs loft and full bath downstairs.
- Several working Cattle Pens with traps
- 4,400 ft airstrip
- Upgraded Electricity is located at the Headquarters Compound as well as a land phone line.
- Cell service barely available an HQ which could be enhanced with booster

There is road easement to the adjoining Beef Canyon Ranch across the ranch but not next to any improvements.

Elevations range from 2,676 to 3,265 feet.









 **KING**  
LAND & WATER

*Protecting Clients. Conserving the Land*



## Habitat

The Chihuahuan Desert is the largest desert in North America-stretching all the way from the southwestern United States deep into the Central Mexican Highlands. Classic “Big Bend Country” of the Old West, Desert Mountain Ranch has maintained much of the environment and appearance of times past. This is lower Chihuahuan Desert with dagger, yucca, lechuguilla, creosote, catchlaw, javalina bush, mariola, sotol, ocotillo, and cholla with a mix of chino grama, black grama, red grama, bear grass, and sideoats grama. Brush and trees include juniper, hackberry, willow, mesquite, persimmon, oaks, and juniper can be found in the draws. In springtime this landscape is in bloom with a wide variety of cacti, yucca, daggers, and native forbs.

## Wildlife

Desert Mountain Ranch is Mule Deer hunting at its best. The ranch has permits through a Managed Land Deer Program and with access to abundant water and feed there is a higher than usual population of wildlife. There are 5 protein feeders scattered around the ranch where you can also find large groups of Aoudad, Mule Deer, Javalinas, and sometimes Elk. Desert Big Horn Sheep can be found as well. This property is home to many species of birds, raptors, songbirds, and game birds such as Blue Quail, Gambel’s Quail, Mourning Dove, and White-winged Dove, as well as larger mammals such as mountain lion, and black bear. The brush, forbs, and grasses provide excellent habitat for these game and non-game animals.







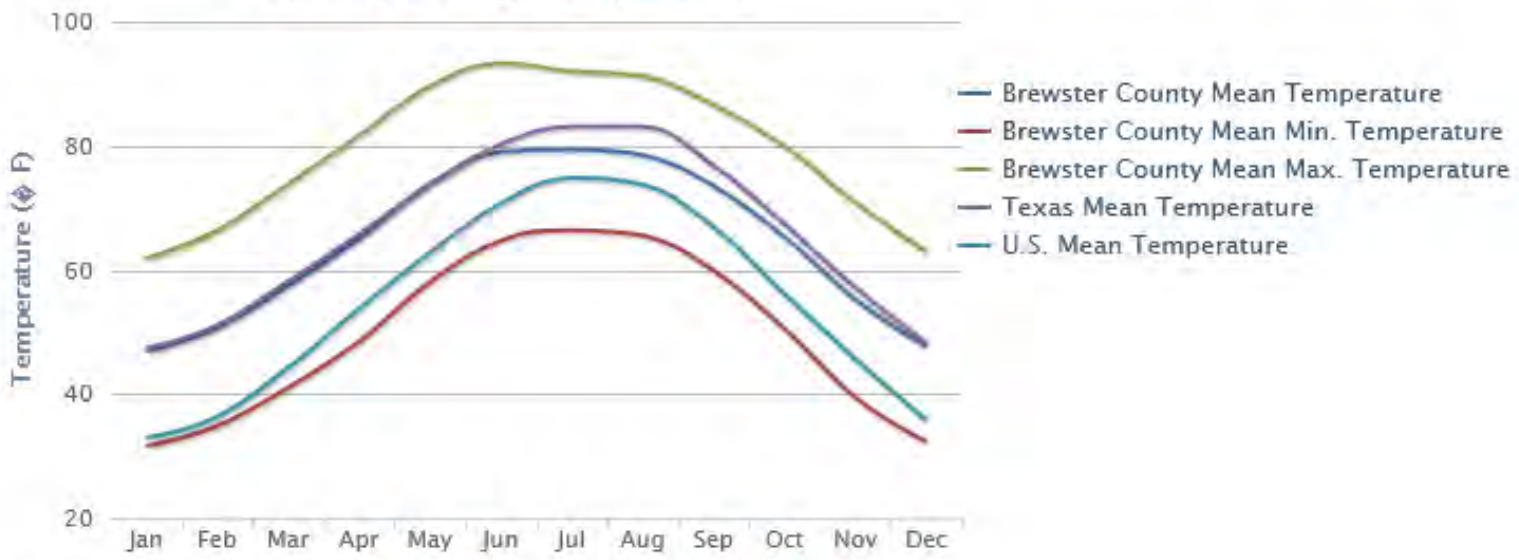


# Average Temperature

## Annual Average Temperature, #146

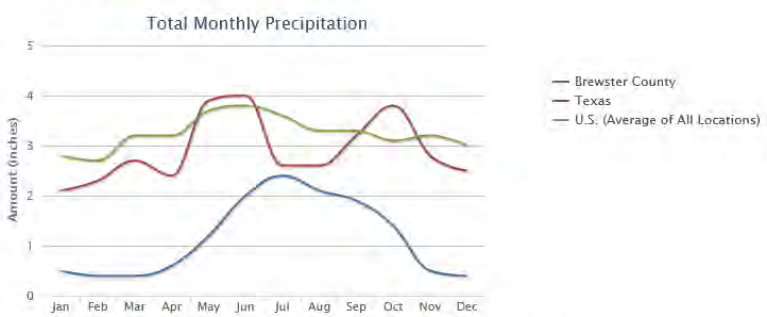


## Monthly Average Temperature



## Ranks: Average Max. Temperature: #57, Average Min. Temperature: #190

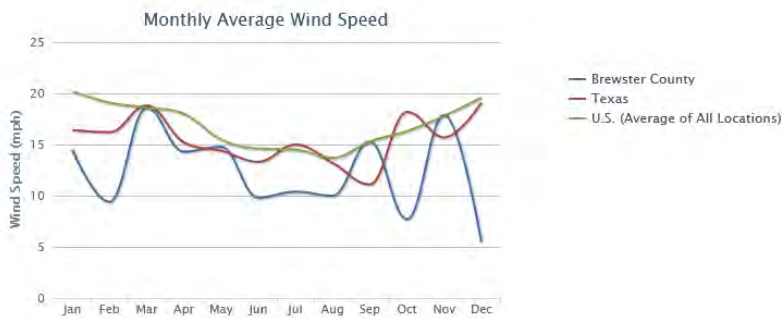
### Precipitation



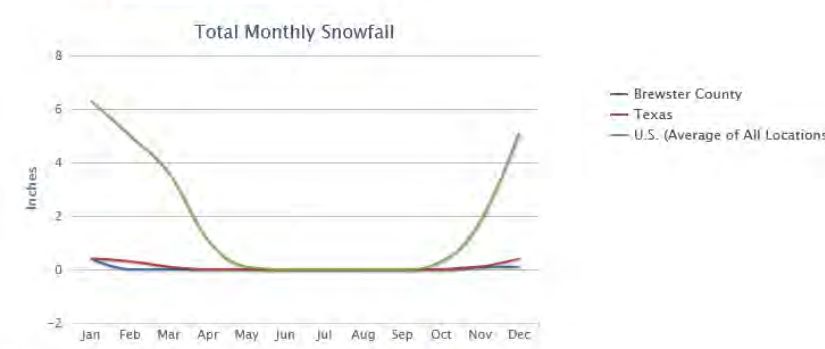
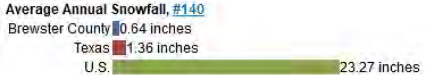
### Average Number of Days with 0.1 Inch or More Precipitation in a Year (this gives an indication of the number of days in a year that it is useful to have an umbrella), #241



### Wind Speed



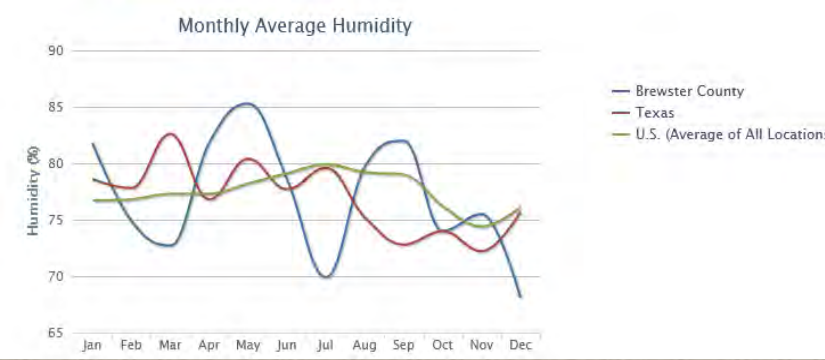
### Snow



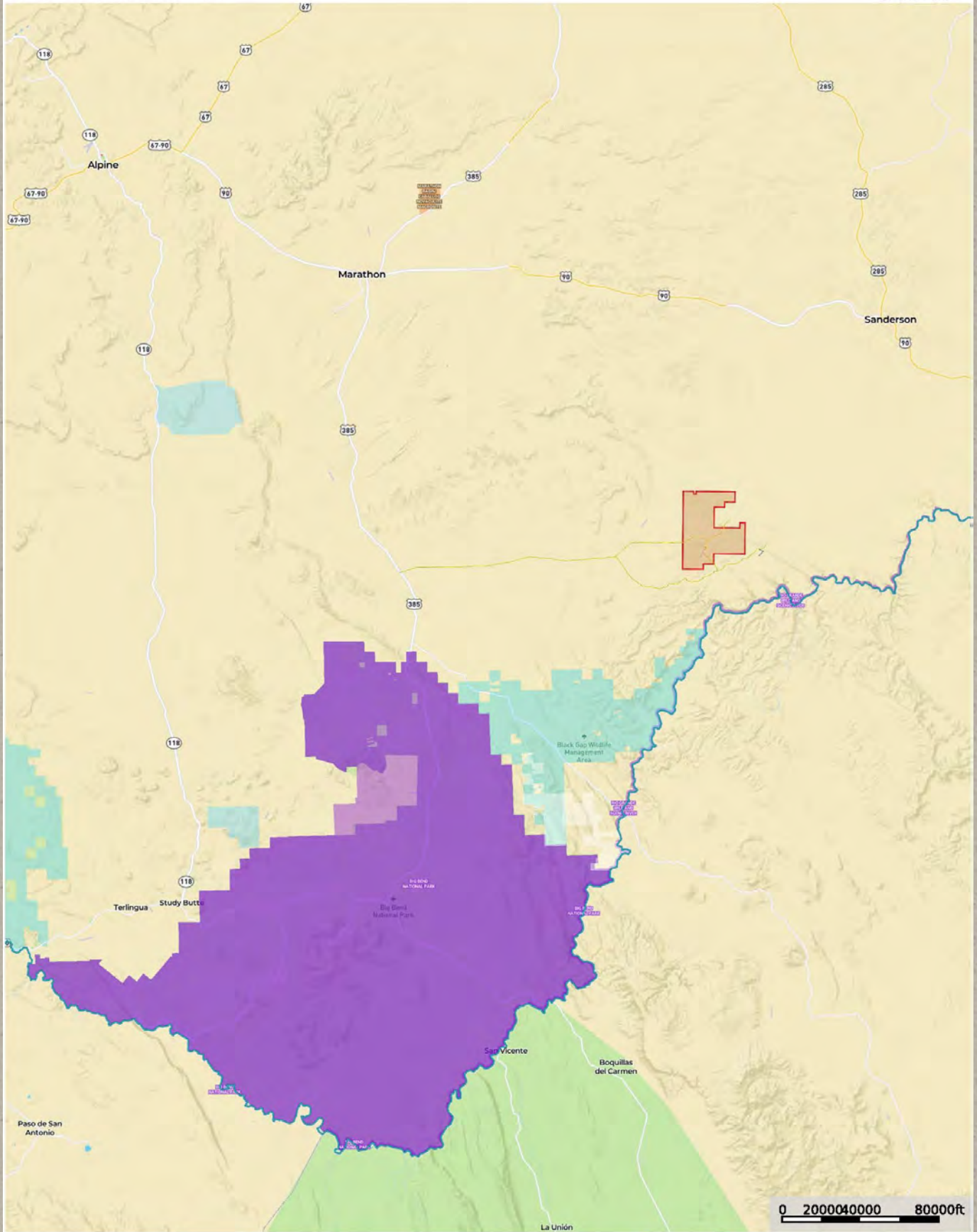
### Average Number of Days with 1 Inch or More Snow Depth in a Year, #139



### Humidity



\* The temperature, snow fall, and precipitation information on this page were calculated from the historical data of 18,000+ U.S weather stations for the period of time from 1980 to 2010. The humidity and wind speed information were calculated from data from 15,000 worldwide stations for the period of time from 1980 to 2010.



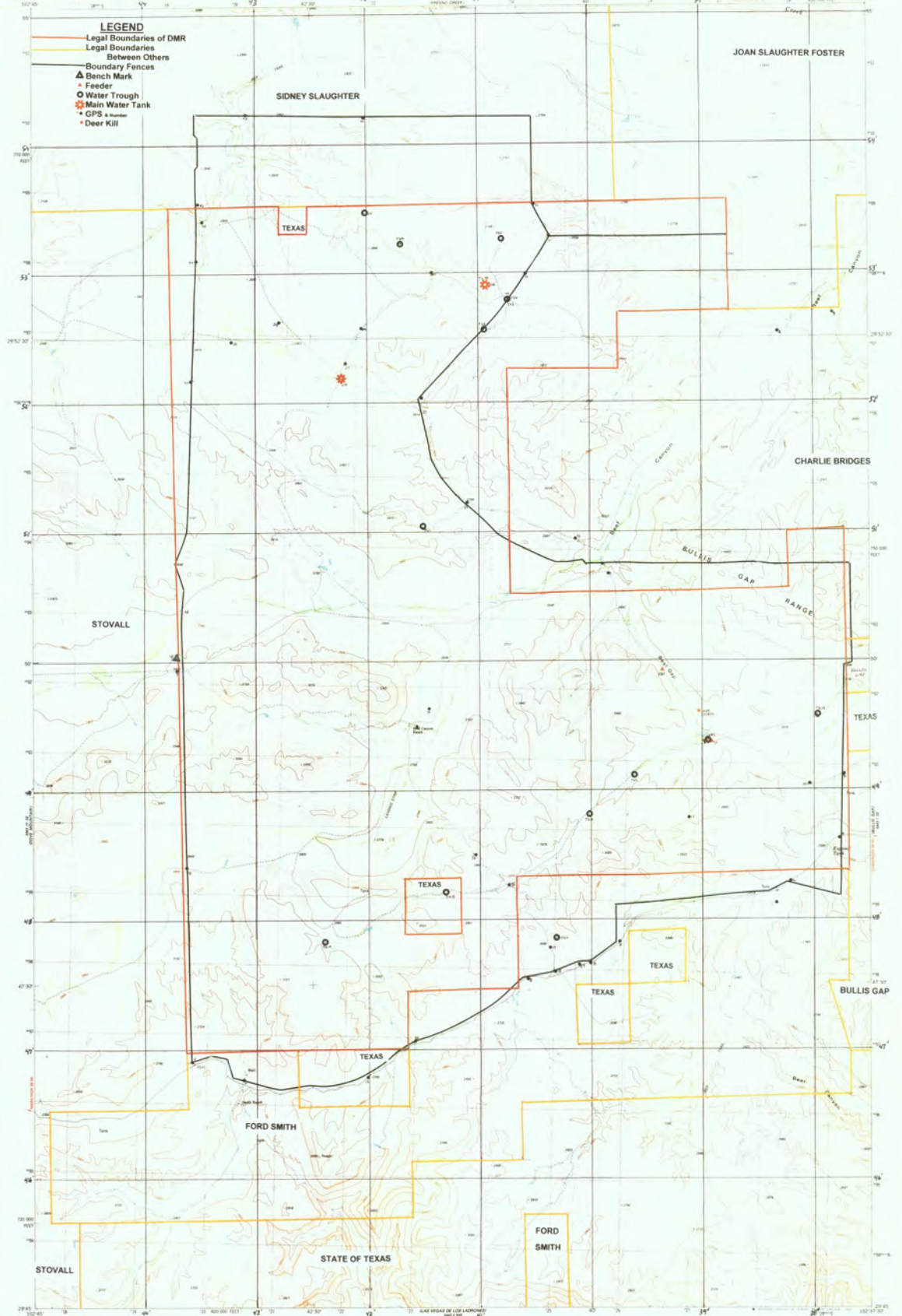
0 20000 40000 80000ft

- [Black Square] Airport
- [Yellow Line] Primary Road
- [Red Triangle] Boundary
- [Green Square] Forest Service
- [Light Blue Square] State Land
- [Pink Square] Fish and Wildlife
- [Purple Square] National Park
- [Orange Square] Other
- [Yellow Square] BLM
- [Red Square] Local Government
- [Light Blue Square] Conservation Easements
- [Blue Line] Stream, Intermittent
- [Blue Line] River/Creek
- [Teal Square] Water Body

# DESERT MOUNTAIN RANCH

UNITED STATES  
DEPARTMENT OF THE INTERIOR  
GEOLOGICAL SURVEY

SAN FRANCISCO SHUTUPS QUADRANGLE  
TEXAS BREWSTER CO.  
7.5 MINUTE SERIES (TOPOGRAPHIC)



- LEGEND**
- Legal Boundaries of DMR
  - Legal Boundaries Between Others
  - Boundary Fences
  - ▲ Bench Mark
  - Feeder
  - Water Trough
  - ★ Main Water Tank
  - CPS
  - Deer Kill

Mapped, edited, and published by the Geological Survey  
Control by 1955 and NSD-5024A  
...ibility by photogrammetry, mainly from aerial photographs  
taken 1974. Field checked 1976. Map revised 1983.  
Projection and 10,000-foot grid ticks. Texas  
coordinate system, south central zone (Lambert conformal cone)  
1,000-meter Universal Transverse Mercator grid, zone 13  
1927 North American Datum.  
To place on the grid, use North American Datum 1983  
from the projection lines 12 meters north and  
41 meters east as shown by dashed corner ticks.  
Five not lettered ones indicate selected ticks only.

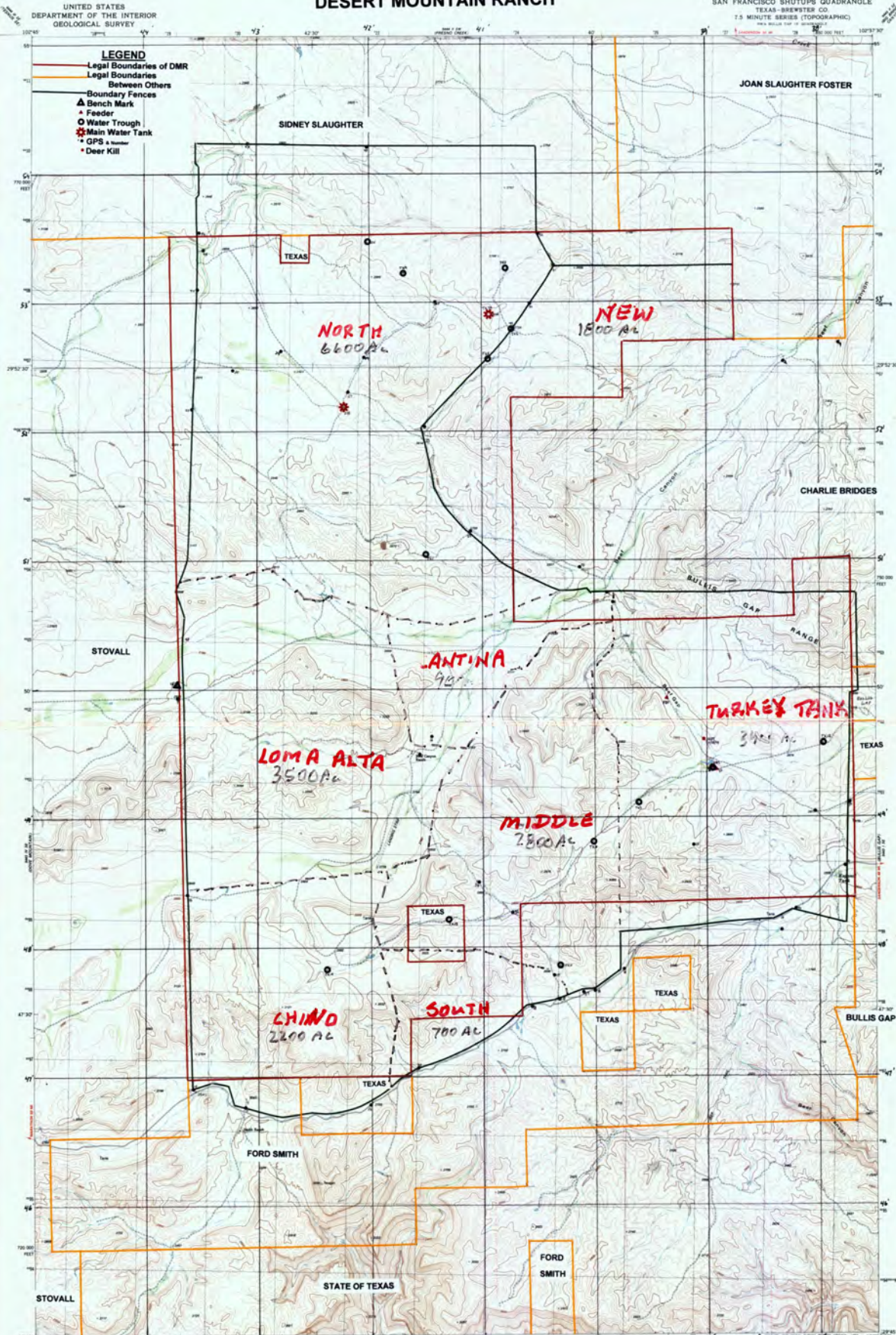
SCALE 1:24,000  
CONTOUR INTERVAL 40 FEET  
DOTTED LINES REPRESENT 20-FOOT CONTOURS  
NATIONAL GEODESIC SURVEY CENTER OF MASS

ROAD CLASSIFICATION  
Primary highways  
Secondary highways  
Tertiary highways  
Feeder roads  
Light duty road, farm or  
improvement surface  
Unimproved road  
Unimproved trail  
1/8" = 500'  
1/16" = 250'

2902-342  
BEEF GAP, TEX.  
N2945-W0237.5T4  
1983  
2902-342 (2nd EDITION) 1983

# DESERT MOUNTAIN RANCH

SAN FRANCISCO SHUTUPS QUADRANGLE  
TEXAS-BREWSTER CO.  
7.5 MINUTE SERIES (TOPOGRAPHIC)  
1963 (REVISED 1983)



Maped, edited, and published by the Geological Survey  
Control by USGS and NAD83/NA84  
Topographic by photogrammetric methods from aerial photographs  
taken 1974. First checked 1976. Map edited 1983  
Projection used: UTM, Zone 16N, datum: NAD83  
Coordinate system: UTM, Zone 16N, datum: NAD83  
1987 North American Datum  
To align with the published North American Datum 1983  
near the projection lines 17 meters south and  
4.2 meters east as shown by dashed corner ticks.  
Fine red dashed lines indicate selected fence lines.

SCALE 1:24,000  
CONTOUR INTERVAL 40 FEET  
DOTTED LINES REPRESENT DEGREE CONTOURS  
NATIONAL GEODETIC VERTICAL DATUM OF 1985  
THIS MAP CONFORMS WITH NATIONAL MAP ACTING STANDARDS  
FOR SALE BY U.S. GEOLOGICAL SURVEY, DENVER, COLORADO 80260, OR RESTON, VIRGINIA 22092  
A PUBLISHER DESCRIBING TOPOGRAPHIC MAPS AND SYMBOLS IS AVAILABLE ON REQUEST

ROAD CLASSIFICATION  
Primary highway: light-gray road, hard or hard surface  
Secondary highway: hard surface  
Unimproved road: hard surface  
Interstate Route: U.S. Route: State Route  
BEEF GAP, TEX. area within map or quadrangle NUMBERED 2902-342  
1983  
2902-342  
J.M. Brown/Hyer



## Price

\$485 per acre | \$9,905,640

## Contact

### **James King, Agent**

King Land & Water, LLC

432 426.2024 Office

432 386.2821 Cell

[James@KingLandWater.com](mailto:James@KingLandWater.com)

### **Harrison King, Agent**

King Land & Water, LLC

512 840 1175 Office

432 386.7102 Cell

[Harrison@KingLandWater.com](mailto:Harrison@KingLandWater.com)

## Disclaimer

This Ranch offering is subject to prior sale, change in price, or removal from the market without notice. While the information above was provided by sources deemed reliable, it is in no way guaranteed by the broker or agent.

[Information about Broker Services](#)

[Texas Real Estate Commission Consumer](#)

[Protection Notice](#)

