



Protecting Clients. Conserving the Land.

Brewster Ranch

407,336± Acres
Brewster, County

“Texas is neither southern nor western. Texas is Texas!”

William Blakley



James King, Agent

Office 432-426-2024

Cell 432-386-2821

James@KingLandWater.com

Harrison King, Agent

Office 512-840-1175

Cell 432-386-7102

Harrison@KingLandWater.com

Brewster Ranch

407,336± Contiguous Acres

Dove Mountain Ranch 330,530± acres

Tesnus Ranch 19,814± acres

YE Mesa 34,480± acres

Matthews Law Ranch 17,542± acres

In 1852 US and Mexico Boundary surveyor Major William H. Emory described the Lower Canyons segment of the Rio Grande as *"never having been traversed by civilized man, because of the impassable character of the river; walled in at places by stupendous rocky barriers and escaping through chasms blocked up by huge rocks that have fallen from impending heights"*.





Location

This ranch is hard to get your head around being half the size of Rhode Island with over 407,336± acres in a single ownership just north of Big Bend National Park and Black Gap Wildlife Management Area. It is all owned by one owner and was assembled through the purchase of over 28 ranches with names like YE Mesa, Tesnus, Dove Mountain, Pope, Bear Mountain, and Matthews Law. South of Marathon to the Lower Canyons of the Wild and Scenic Rio Grande near Big Bend National Park. It's big, it's Texas, and it's wild!

Brewster Ranch is an assemblage of 28 properties that have been carefully acquired over decades to include some of the most amazing and important habitats and land features outside the one million acres of public lands to the south in Big Bend. San Francisco Creek, Dove Mountain, YE Mesa, Shely Peaks, Pine Mountain, Maravillas Canyon, Bullis Gap, Housetop Mountains, Pena Blanca Mountain, Yellow House, Reed Spring and Darling Canyon to name a few. The complex lies mostly east of highway 385 and includes historic ranches such as Bullis Gap, Rancho Verde, San Francisco Creek, Chaney, Cow Creek, Slaughter, Asa Jones, Gage Holland, Tesnus, South Pope, YE Mesa, Bear Creek, Ocotillo, and Love Dog Canyon which all make up this expanse of West Texas.



Description

Four Ranches

Brewster Ranch is also being marketed as four separate ranches each with their own detailed descriptions, photography, and maps. The following are the names of the ranches:

Dove Mountain Ranch	330,530± acres
Tesnus Ranch	19,814± acres
YE Mesa Ranch	34,480± acres
Matthews Law Ranch	17,542± acres

Classic “Big Bend Country” of the Old West, Brewster Ranch has maintained much of the environment and appearance of times past. Pioneers settled this landscape in the mid 1800’s creating working ranches rich in history and today important wildlife hunting opportunities such as desert mule deer, elk, desert big horn sheep, scaled quail and some of the most important habitat for migrations of wildlife in the Chihuahuan Desert between the borderlands of Texas and Mexico to the south.

Brewster Ranch is as diverse as it comes with over 10 headquarters in varying degree of condition scattered over this 662± square mile landscape. Chaney Headquarters are the most complete with not only significant main houses and a number of outbuildings, bunkhouses, and guest houses. The ranch is leased to several local ranchers that keep up the infrastructure, waters, and improvements. The main roads have recently been reworked with others in the process. There are a series of older airstrips scattered across the ranch at the various Headquarters. Details of the four ranches being offered further describes the improvements.

The Chihuahuan Desert is one of the most diverse in the world and Brewster Ranch contains a variety of habitats found in Big Bend National and State Parks just to the south. It is safe to say that Brewster Ranch is one of the most important ecologically significant intact properties on the market today. Rio Grande River, Pine covered Mountains, Cottonwood Gallery Forests, massive outcrop mountains, diverse lower desert floors, limestone hills, and grasslands combine into one private conservation landscape.





Land features include the pine covered Tres Hermanos summit on the Shely Peaks at 5,210 feet cascading down into a wide scenic valley where you can find live water section of San Francisco Creek that is cottonwood lined for over five miles defining the north end of the ranch. YE Mesa and Matthew Law portions have over 18 miles of the Santiago Mountains with YE Mesa itself an igneous outcrop standing as a sentinel to the entrance of Big Bend Nations Park. To the south, adjacent to Black Gap WMA, you will find Dove Mountain Ranch with its remarkable canyons and mountain outcrops providing huntable populations of Desert Big Horn Sheep. The east part of the ranch is a

series of limestone hills and mountains with desert flats all the way to Bullis Range and then to the Lower Canyons of the Ro Grande. Looking into Mexico and the 1,000 ft canyon walls is one of the most treasured landscapes in North America. Circling back north you find a deep gorge called the San Francisco Shut Ups where a dramatic limestone canyon with a variety of side canyons and diverse vegetation goes for miles, impenetrable by roads. Toward the center of the ranch, you have Pine Mountain where there is a population of elk and a series of steep canyon heads and cliffs with panoramic views out over the region.



Ranching and Wildlife

This wild land is a series of operating ranches, which is the way of life in the area spanning 150 years. The various ranches that make up this spread have springs, wells, tanks, troughs, pipelines, roads, fences, pastures, traps, pens, barns, and outbuildings that today operate a series of cattle herds. There are excellent Lessees with several head of cattle which managed at light stocking rate to help restore the rangeland and enhance the wildlife values. Neighbors and area ranchers have a series of carefully designed short term leases that allows the next owner to continue as is or to operate their own cattle ranch.

With the vast landscape comes a diversity of habitats and a rich population of native wildlife. This property is home to many species of birds, raptors, songbirds, and game birds such as blue (scaled) quail, mourning dove, and white-winged dove as well as larger mammals such as desert mule deer, whitetail deer, javelina, desert big-horn sheep, elk, aoudad, mountain lion, and black bear. Nature abounds and the ranches have many hiking and recreation uses beyond hunting. Also, this is part of a Dark Sky Reserve area where stars at night are amazing. The brush, forbs, and grasses provide excellent habitat for these game and non-game animals. The live water segment of San Francisco Creek is especially important for migrating songbirds, bats and butterflies utilizing the riparian habitat. These desert streams are literally “highways” for these migrations in the fall and spring making wildlife watching on the ranch second to none.





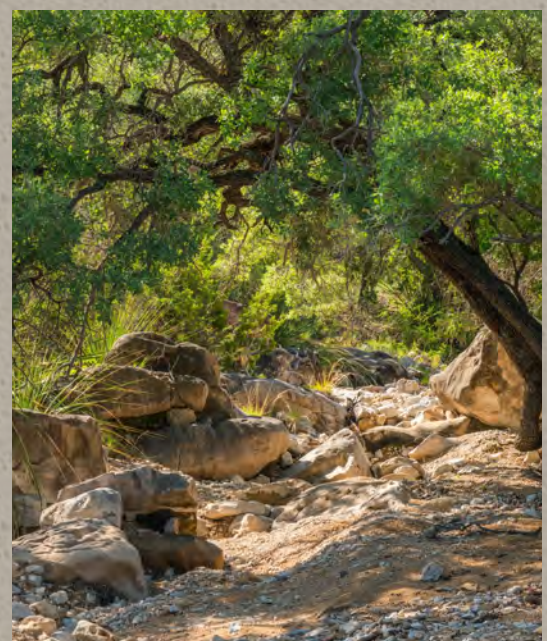
Habitat

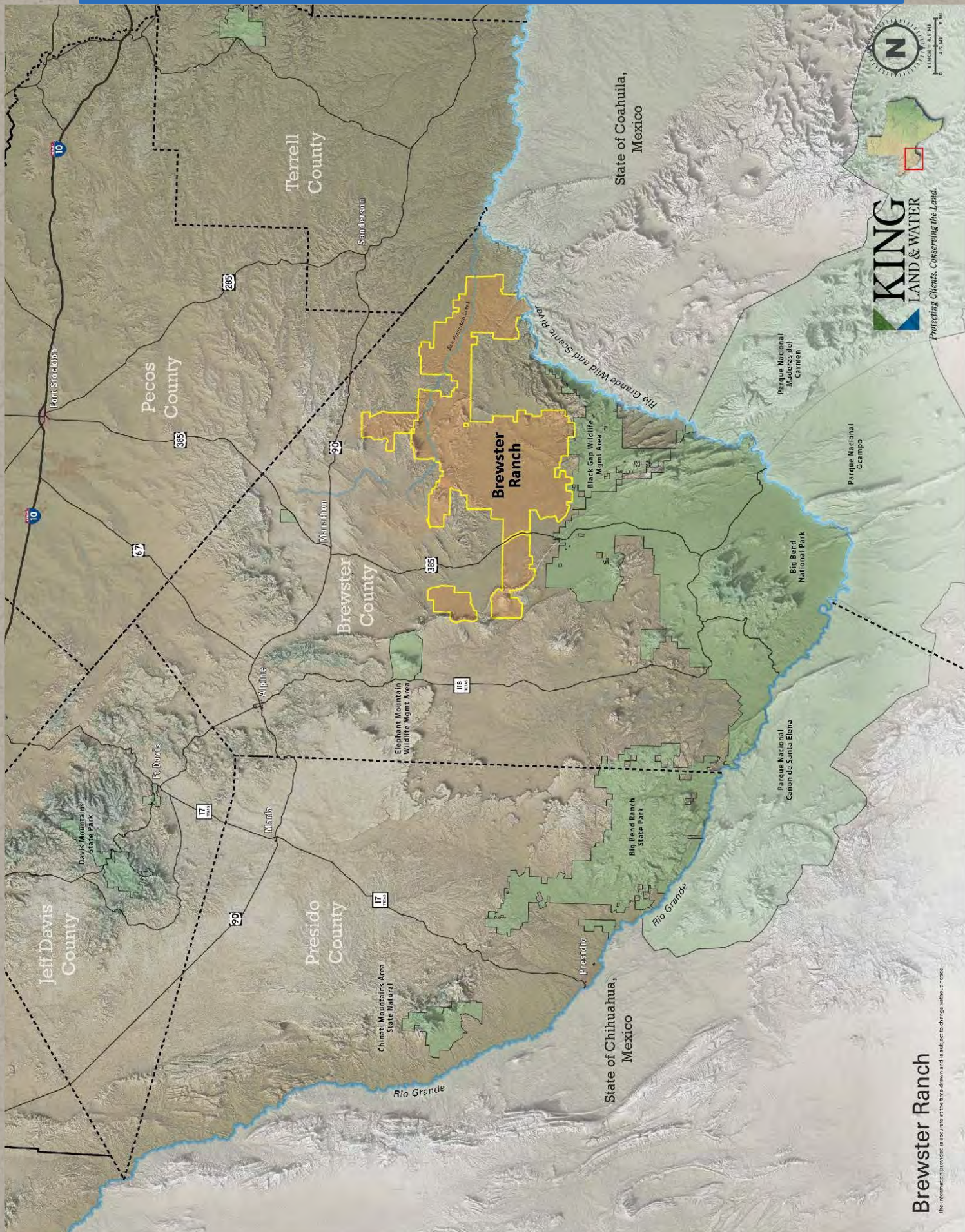
This vast area lies in a wide elevation range allowing for mix of vegetation from the higher to lower elevations of the Chihuahuan Desert such as dagger, yucca, lechuguilla, creosote, catclaw, javalina bush, mariola, sotol, ocotillo, and cholla with a mix of chino grama, black grama, red grama, bear grass, tangelhead, and sideoats grama. Brush and trees include juniper, hackberry, mesquite, persimmon, pine, cottonwoods, willows, madrone, and oaks in the higher elevations, canyons, and draws. In springtime this landscape is in bloom with a wide variety of cacti, yucca, daggers, native forbs, and wildflowers.



Water

There are numerous submersible water wells, solar wells, and windmills that supply water to various storage tanks that are then piped to a network of water troughs for livestock and wildlife. Natural water occurs from springs, tinajas, San Francisco Creek, the Rio Grande and numerous surface tanks that gather water during the summer monsoons. Water is vital in the desert and with the enhancements of the existing extensive water systems wildlife and livestock can continue to flourish.

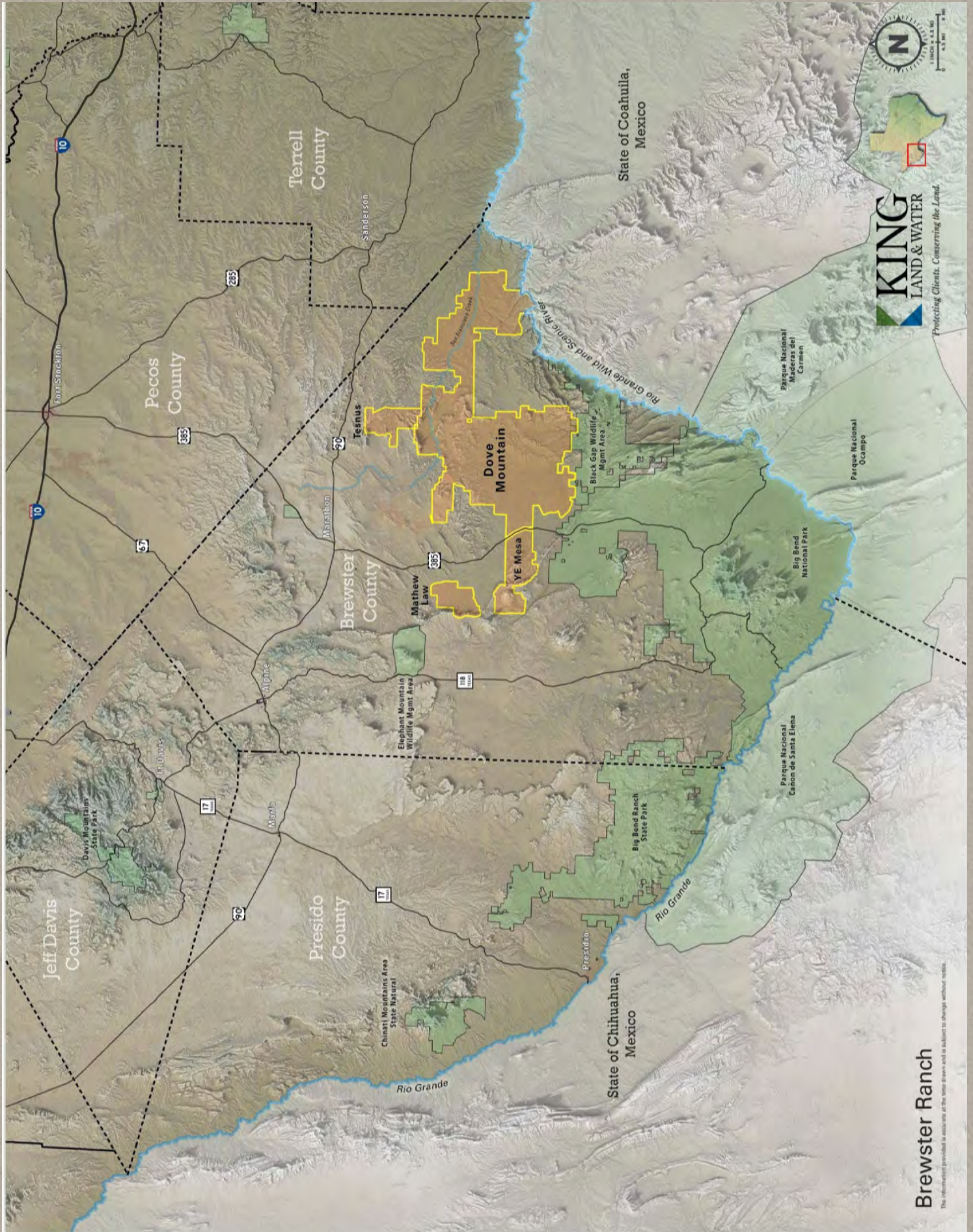




KING
LAND & WATER
Protecting Clients. Conserving the Land.

Brewster Ranch

This information provided is accurate at the time drawn and is subject to change without notice.

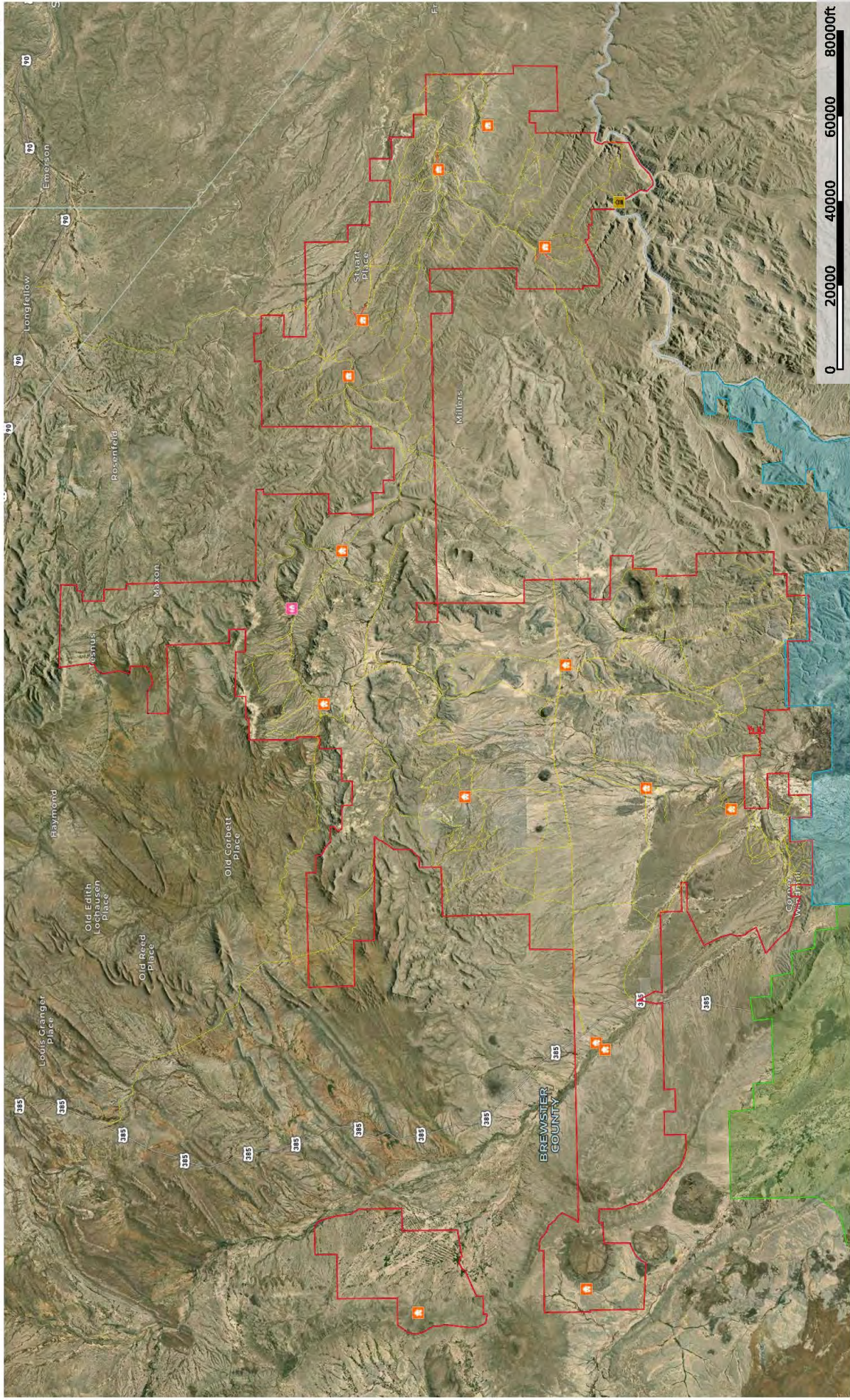


KING
LAND & WATER
Protecting Clients. Conserving the Land.

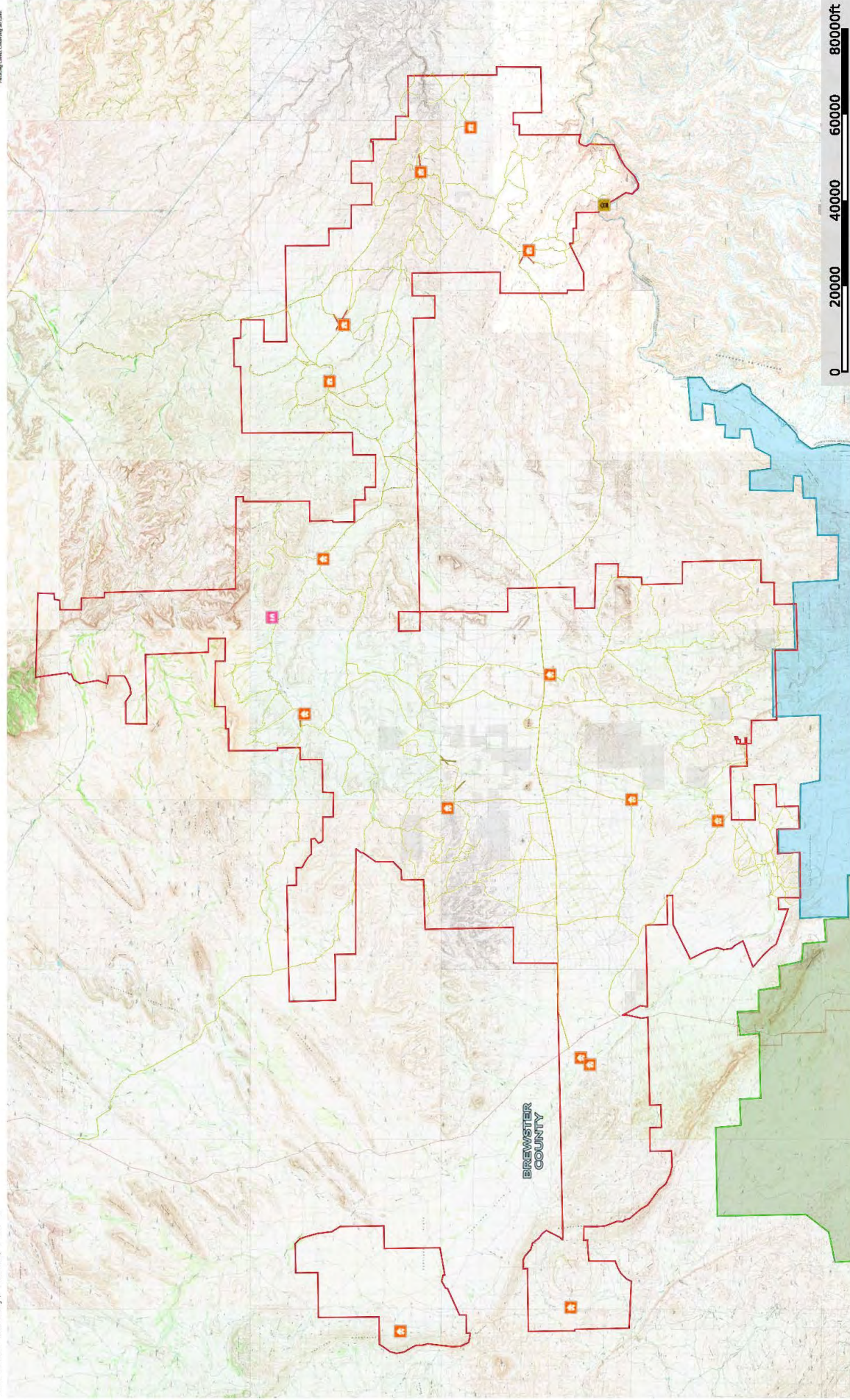
Brewster Ranch

This information provided is accurate as of the date drawn and is subject to change without notice.

Brewster Ranch 2023 Brewster County, Texas, AC +/-



- Cabin
- Headquarters
- House
- Asa's Pump house
- Primary Road
- Road / Trail
- Road / Trail
- As strip
- Brewster Ranch
- Black Gap WMA
- Matthews Law
- OUT





Price

407,336± Acres

\$695 per acre/ \$283,098,520

Contact

James King, Agent

Office 432-426-2024

Cell 432-386-2821

James@KingLandWater.com

Harrison King, Agent

Office 512-840-1175

Cell 432-386-7102

Harrison@KingLandWater.com

Disclaimer

This Ranch offering is subject to prior sale, change in price, or removal from the market without notice. While the information above was provided by sources deemed reliable, it is in no way guaranteed by the broker or agent.

[Information about Broker Services](#)

[Texas Real Estate Commission Consumer Protection Notice](#)