



Protecting Clients. Conserving the Land.

Brewster Ranch

424,000± Acres
Brewster, County

“Texas is neither southern nor western. Texas is Texas!”

William Blakley



James King, Agent

Office 432-426-2024

Cell 432-386-2821

James@KingLandWater.com

Harrison King, Agent

Office 512-840-1175

Cell 432-386-7102

Harrison@KingLandWater.com



Protecting Clients. Conserving the Land.

Location

This ranch is hard to get your head around being half the size of Rhode Island with over 424,000 acres in a single ownership just north of Big Bend National Park and Black Gap Wildlife Management Area. It is all owned by one owner and was assembled through the purchase of over 30 ranches with names like Horse Mountain, Dagger Flats, YE Mesa, Tesnus, Dove Mountain, Rio Texaco, Pope, Bear Mountain, and Matthews Law. South of Marathon to the Lower Canyons of the Wild and Scenic Rio Grande near Big Bend National Park. Its big, its Texas, and its wild!





Description

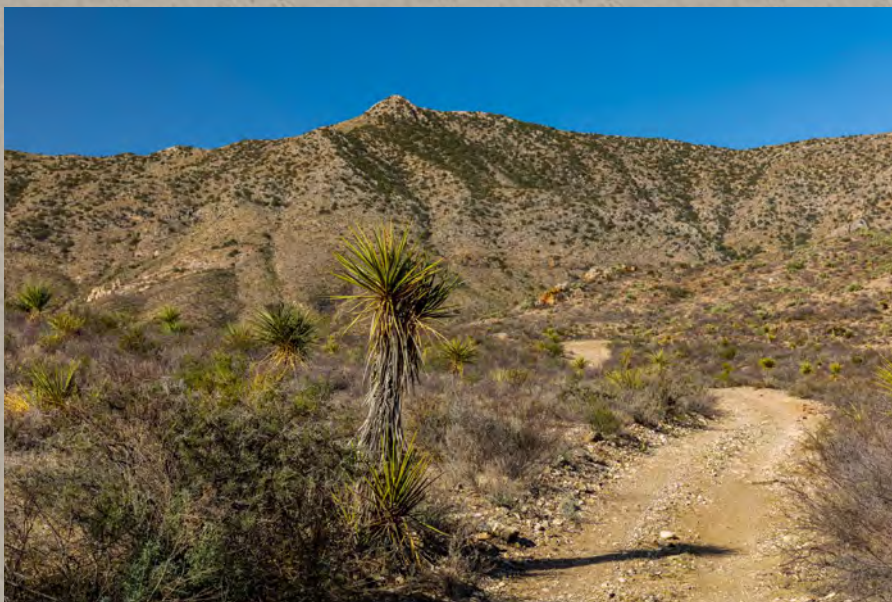
Classic “Big Bend Country” of the Old West, this assemblage of ranches continues to maintain much of the environment and appearance of times past. Pioneers settled this landscape in the mid 1800’s creating working ranches rich in history and today important wildlife hunting opportunities such as desert mule deer, elk, desert big horn sheep, scaled quail and some of the most important habitat for migrations of wildlife in the Chihuahuan Desert between the borderlands of Texas and Mexico to the south.

This ranch is as diverse as it comes with many headquarters and ranching operations scattered over 662 square mile landscape. Currently the ranch has grazing and hunting lessees that take care of the rangeland and the wildlife while maintaining waters, fences, improvements, and roads. Airstrips, headquarters, roads, waters, pens, and fences create a complex of working lands. Parts of the ranch are convenient to area amenities like the Gage Hotel in Marathon, Alpine, or Big Bend National Park while others are as remote and private as you can find in Texas.



This is all part of the Chihuahuan Desert, one of the most diverse places in the world and contains a variety of habitats. Sky Island Mountain tops, rich mile high grasslands, rugged deep canyons, pine mountains to beautiful low deserts all with its abundance of unique plants and animals.

Land features include the pine covered Tres Hermanos summit on the Shely Peaks at 5,210 feet cascading down into a wide scenic valley where you can find live water section of San Francisco Creek that is cottonwood lined for over five miles. White chert rock outcrops called Caballos Novaculite at Horse Mountain where you can also find Reed Spring with its many native American grind holes. YE Mesa and Matthew Law portions have over 18 miles of the Santiago Mountains with YE Mesa itself an igneous outcrop standing as a sentinel to the entrance of Big Bend Nations Park. To the south, adjacent to Black Gap WMA, you will find Dove Mountain Ranch with its remarkable canyons and mountain outcrops providing huntable populations of Desert Big Horn Sheep. At the far southern extreme you can find limestone hills and mountains with desert flats all the way to the Bullis Range and the Lower Canyons of the Rio Grande.



Ranching and Wildlife

This wild land is a series of operating ranches, which is the way of life in the area spanning 150 years. The various ranches that make up this spread have springs, wells, tanks, troughs, pipelines, roads, fences, pastures, traps, pens, barns, and outbuildings that today operate a series of cattle herds. There are excellent Lessees with several head of cattle which managed at light stocking rate to help restore the rangeland and enhance the wildlife values. Neighbors and area ranchers have a series of carefully designed short term leases that allows the next owner to continue as is or to operate their own cattle ranch.

With the vast landscape comes a diversity of habitats and a rich population of native wildlife. This property is home to many species of birds, raptors, songbirds, and game birds such as blue (scaled) quail, mourning dove, and white-winged dove as well as larger mammals such as desert mule deer, whitetail deer, javelina, desert big-horn sheep, elk, aoudad, mountain lion, and black bear. Nature abounds and the ranches have many hiking and recreation uses beyond hunting. Also, this is part of a Dark Sky Reserve area where stars at night are amazing. The brush, forbs, and grasses provide excellent habitat for these game and non-game animals. The live water segment of San Francisco Creek is especially important for migrating songbirds, bats and butterflies utilizing the riparian habitat. These desert streams are literally “highways” for these migrations in the fall and spring making wildlife watching on the ranch second to none.





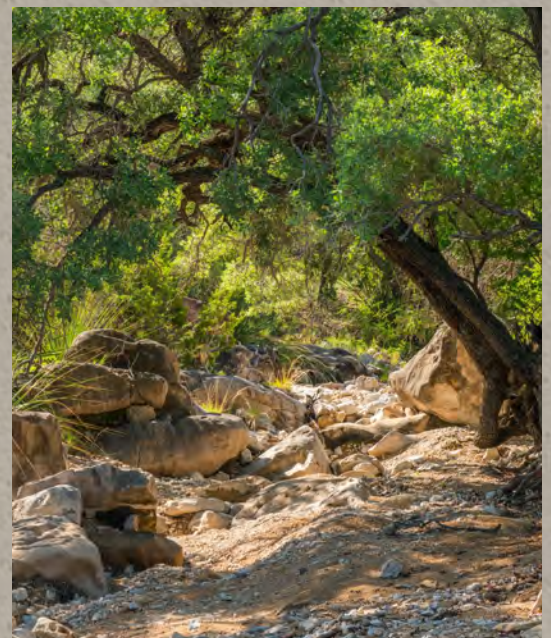
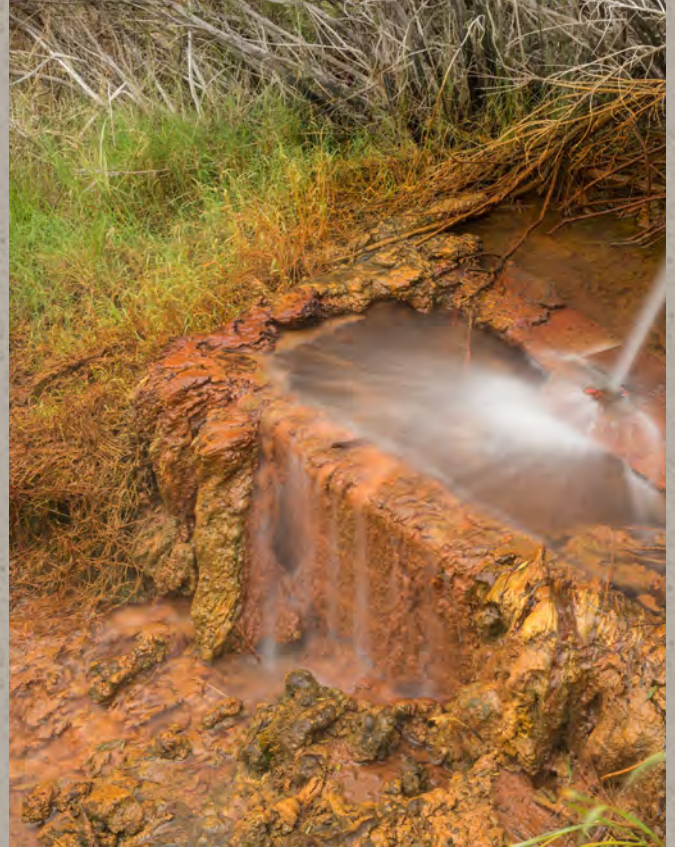
Habitat

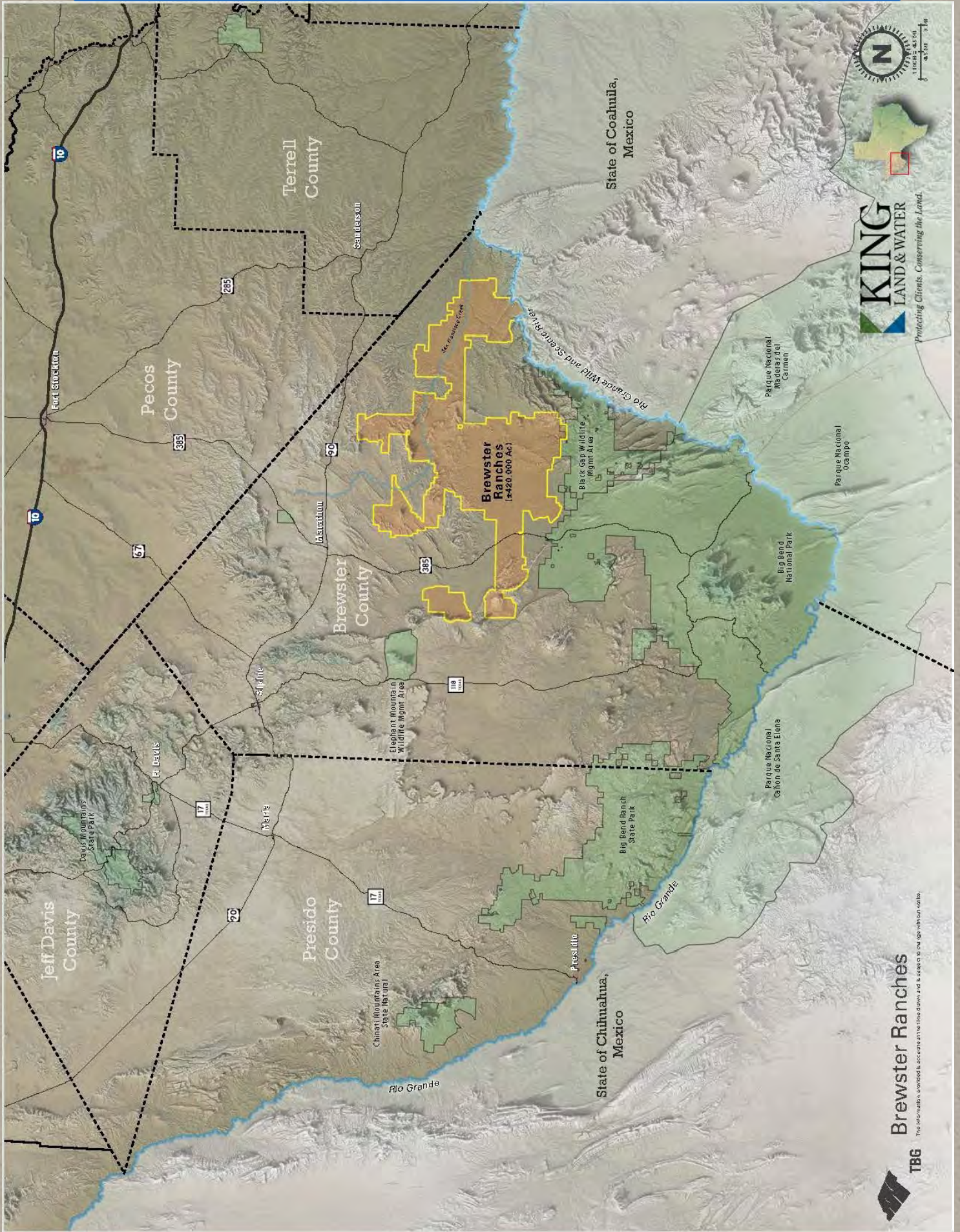
This vast area lies in a wide elevation range allowing for mix of vegetation from the higher to lower elevations of the Chihuahuan Desert such as dagger, yucca, lechuguilla, creosote, catclaw, javalina bush, mariola, sotol, ocotillo, and cholla with a mix of chino grama, black grama, red grama, bear grass, tangelhead, and sideoats grama. Brush and trees include juniper, hackberry, mesquite, persimmon, pine, cottonwoods, willows, madrone, and oaks in the higher elevations, canyons, and draws. In springtime this landscape is in bloom with a wide variety of cacti, yucca, daggers, native forbs, and wildflowers.



Water

There are numerous submersible water wells, solar wells, and windmills that supply water to various storage tanks that are then piped to a network of water troughs for livestock and wildlife. Natural water occurs from springs, tinajas, San Francisco Creek, the Rio Grande and numerous surface tanks that gather water during the summer monsoons. Water is vital in the desert and with the enhancements of the existing extensive water systems wildlife and livestock can continue to flourish.



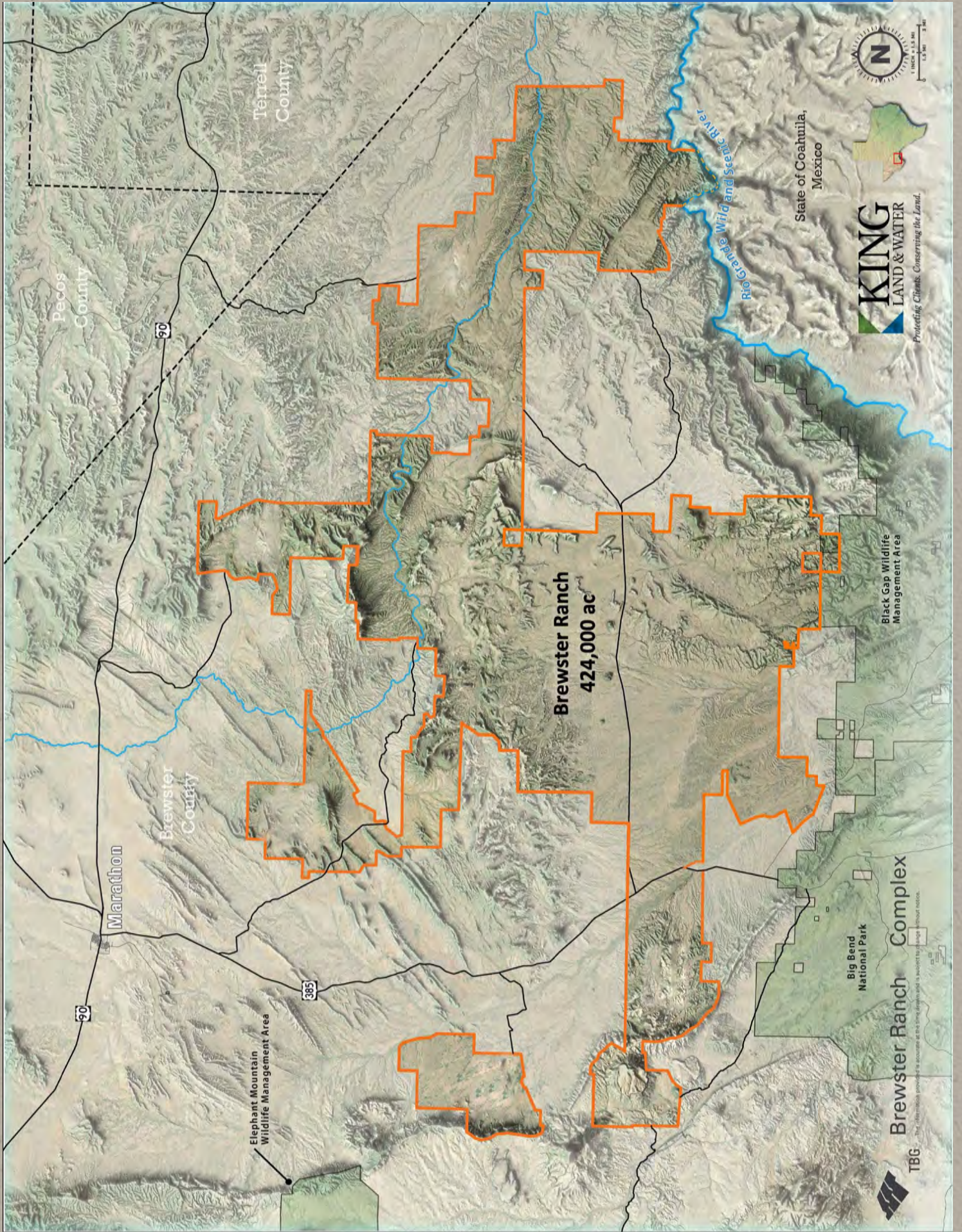


KING
LAND & WATER
Protecting Clients. Conserving the Land.

Brewster Ranches

The information provided is accurate as of the date and is subject to change without notice.





Pecos County

Terrell County

Brewster County

Marathon

80

395

Brewster Ranch
424,000 ac

Elephant Mountain
Wildlife Management Area

Black Gap Wildlife
Management Area

Big Bend
National Park

Brewster Ranch Complex

KING
LAND & WATER

Protecting Clients. Conserving the Land.



State of Coahuila,
Mexico



TBG

The information provided is accurate at the time prepared and is subject to change without notice.



Price

424,000± Acres

\$632 per acre / \$267,788,015

Contact

James King, Agent

Office 432-426-2024

Cell 432-386-2821

James@KingLandWater.com

Harrison King, Agent

Office 512-840-1175

Cell 432-386-7102

Harrison@KingLandWater.com

Disclaimer

This Ranch offering is subject to prior sale, change in price, or removal from the market without notice. While the information above was provided by sources deemed reliable, it is in no way guaranteed by the broker or agent.

[Information about Broker Services](#)

[Texas Real Estate Commission Consumer Protection Notice](#)

KING
LAND & WATER
Protecting Clients. Conserving the Land.